



Bigdata: what opportunities for better public services?

*Giulio Quaggiotto
Pulse Lab Jakarta, Manager
@gquaggiotto
#data4id*

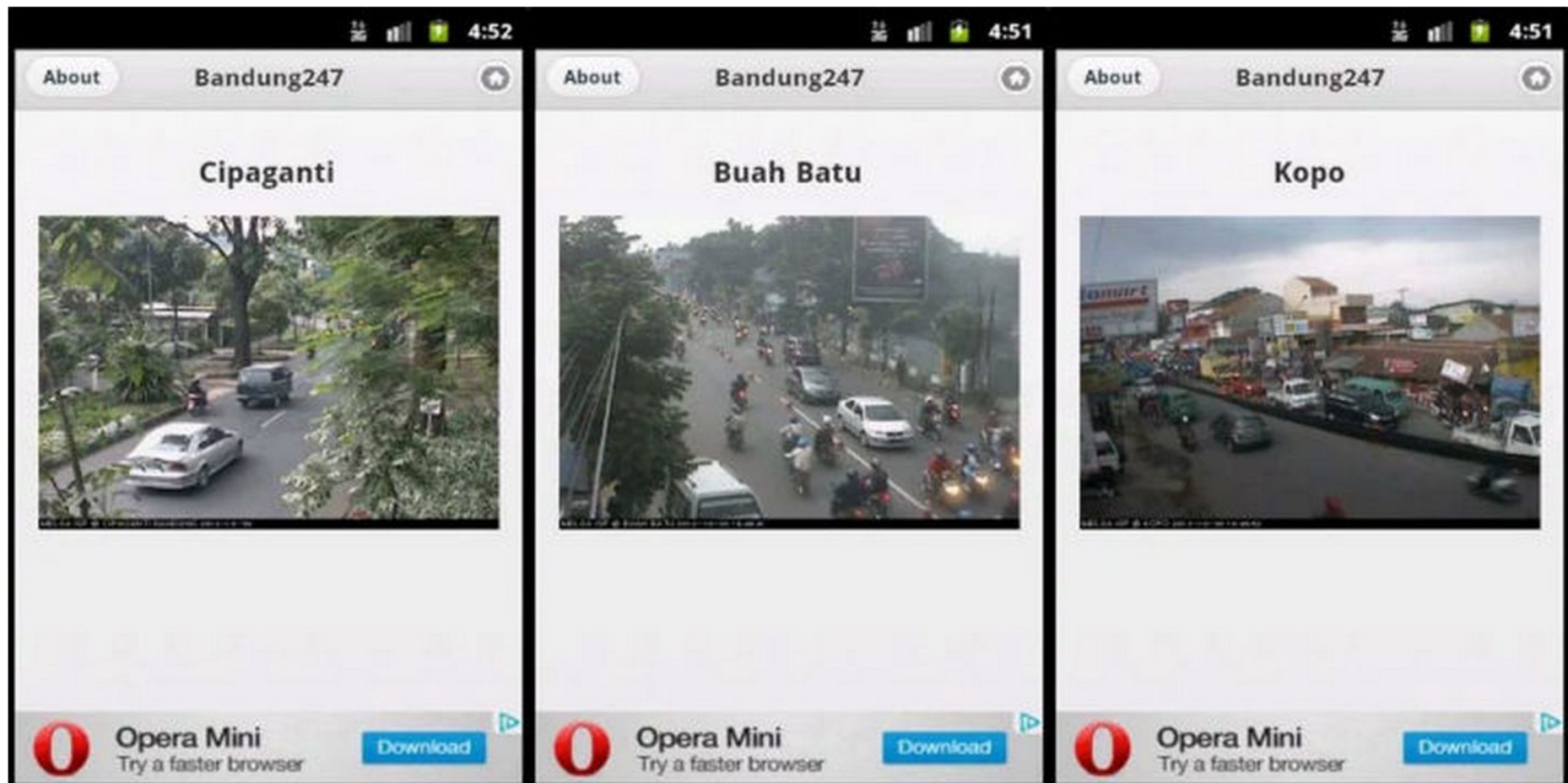
A world of digital traces....



Imagine...



2. Bandung 247

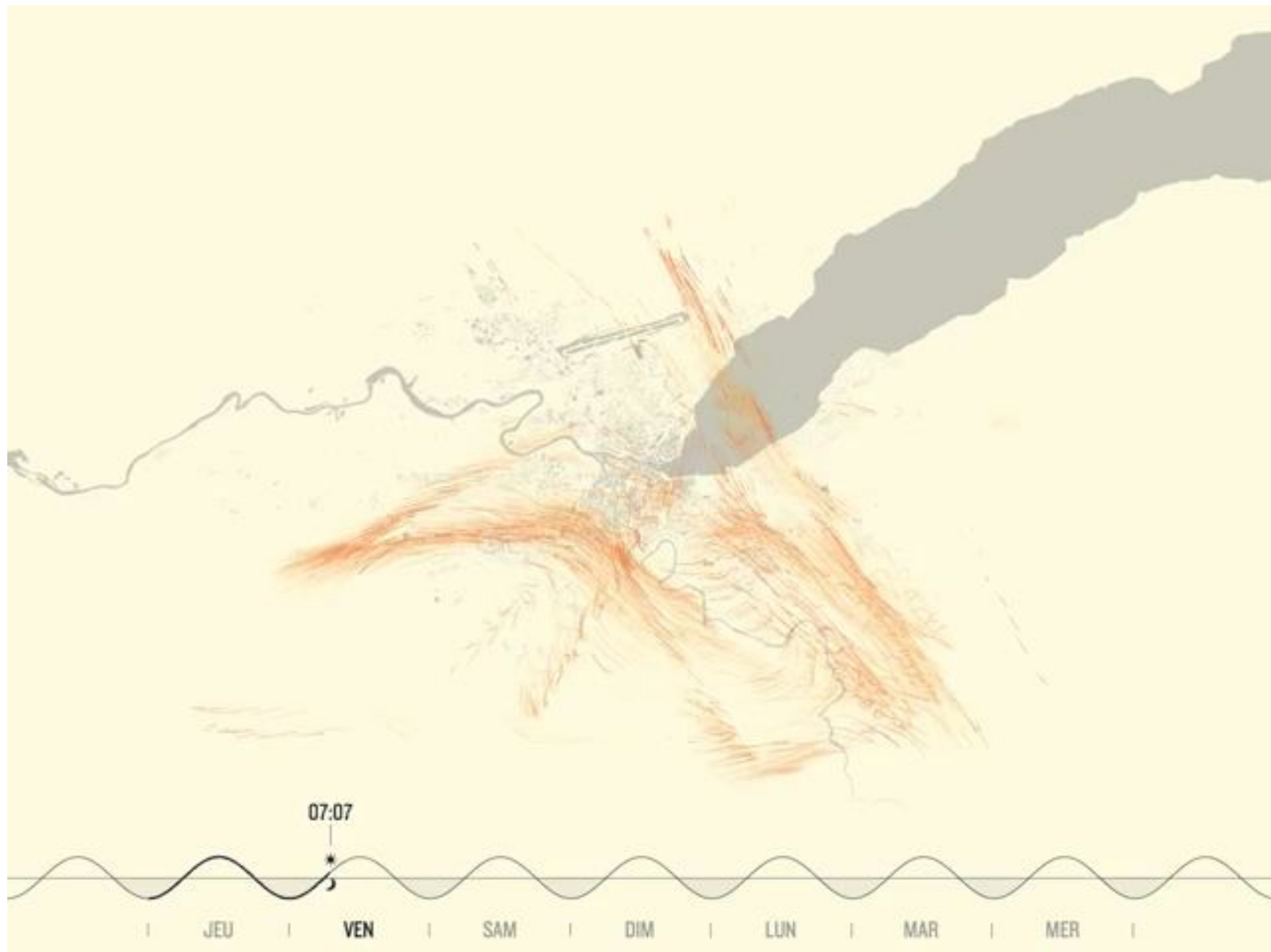


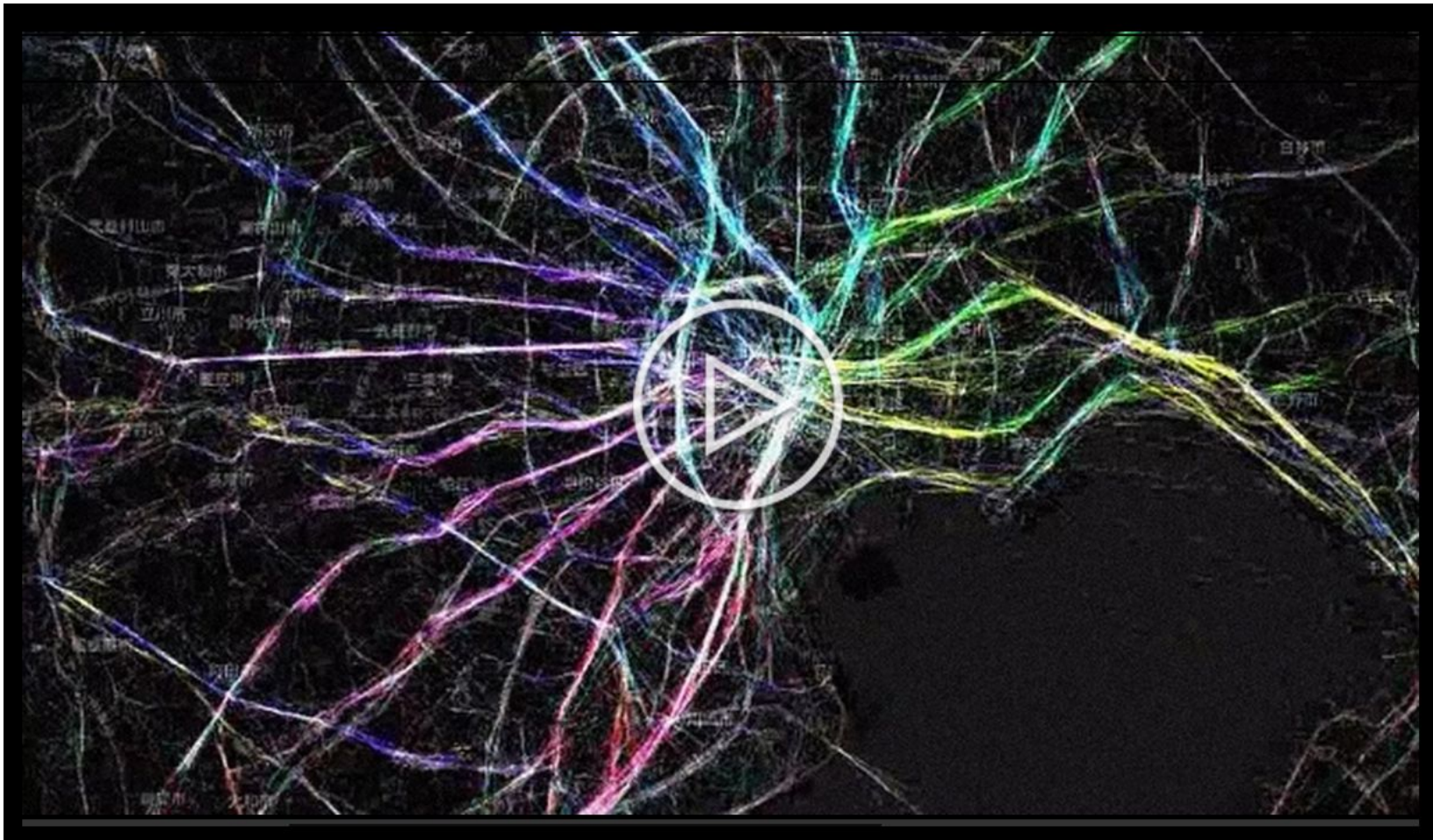
Bandung is a restful city that has become a weekend retreat for many Jakarta citizens. This makes the

1. Public service users produce an increasing amount of “**digital traces**”
2. They increasingly expect **real-time** feedback



Would you cross the street based on information that is five minutes old?





<http://www.fastcoexist.com/3034990/scientists-can-now-predict-where-people-will-run-when-an-earthquake-strikes>



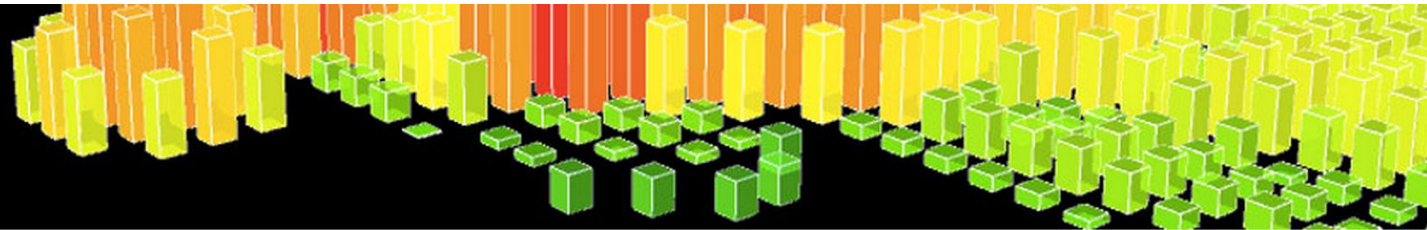


Retail in Real-Time

In **13 seconds** \$ **120,548** has been spent on retail online and \$ **1,218,874** has been spent offline in the US:⁽¹⁾



<http://www.retale.com/info/retail-in-real-time/>



LIVE Singapore!

project

research

exhibition

visualizations

press

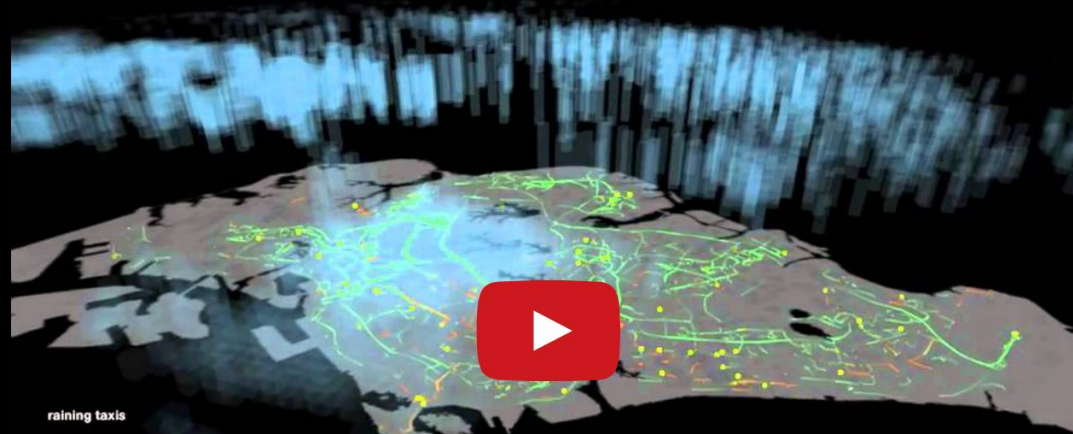
The Real-Time City is Now Real!

TEAM

Carlo Ratti, lab director
Kristian Kloeckl, project leader
Afian Anwar
Assaf Biderman
Rex Britter
Xiaoji Chen
Pedro Cruz
Jennifer Dunnam
David Lee
Till Nagel
Darshan Santani
Oliver Senn
Aaron Siegel
Christian Sommer
Anthony Vanky
Dustin York

After an initial process of data analysis from several data streams, six visualizations have been delineated that investigate different areas of interest and of relevance to the city of Singapore. The visualizations aim to provide greater understanding of some of the city's dynamics.

LIVE Singapore!



raining taxis

singapore's mobility is heavily
reliant on taxis, but what happens
when it rains? getting hold of a
cab is not the easiest thing in the
world. we are exploring how our
transportation system behaves by

1. Public service users produce an increasing amount of “**digital traces**”
2. They increasingly expect **real-time** feedback
3. Service providers can harness digital traces to better understand needs, predict issues

Big data

- **Real time**
- **“Already there” – not designed for collection**
- **Massive quantity**
- **End of sampling?**
- **100% accuracy is overestimated**

Real time feedback

Listening to citizens realtime

TransportBuzz Demo

Transport tweets around London
- try searching for *strike*

Pan and zoom disabled in demo:
contact [transportapi](https://transportapi.com) for access to
full version.

EXPLICIT CONTENT WARNING:
tweets are uncensored.

☒ Tag cloud layer

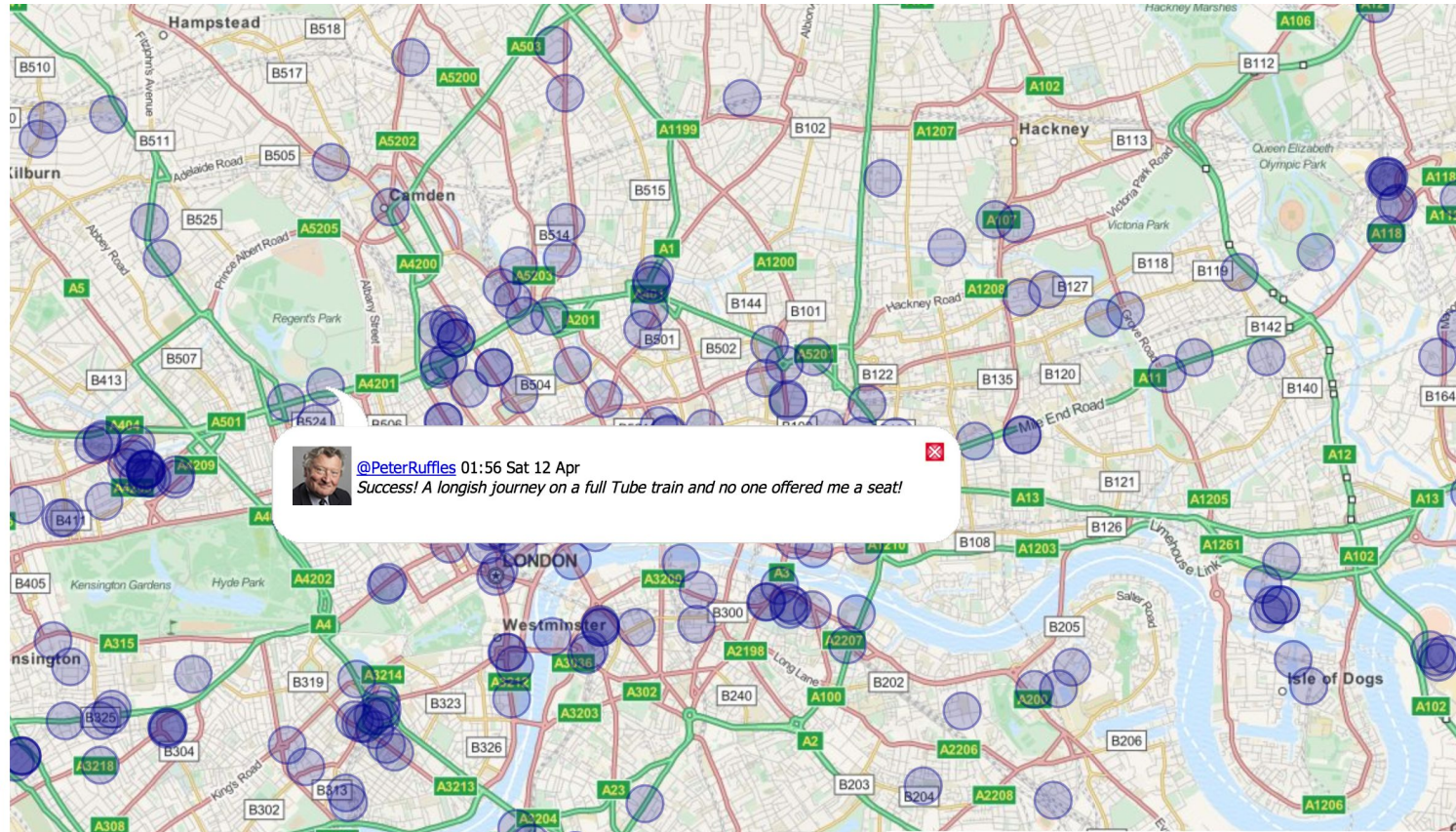
☒ Tweet layer

22:40 Mon 07 Apr -
17:39 Sat 12 Apr

tweet text filter

✕ tube

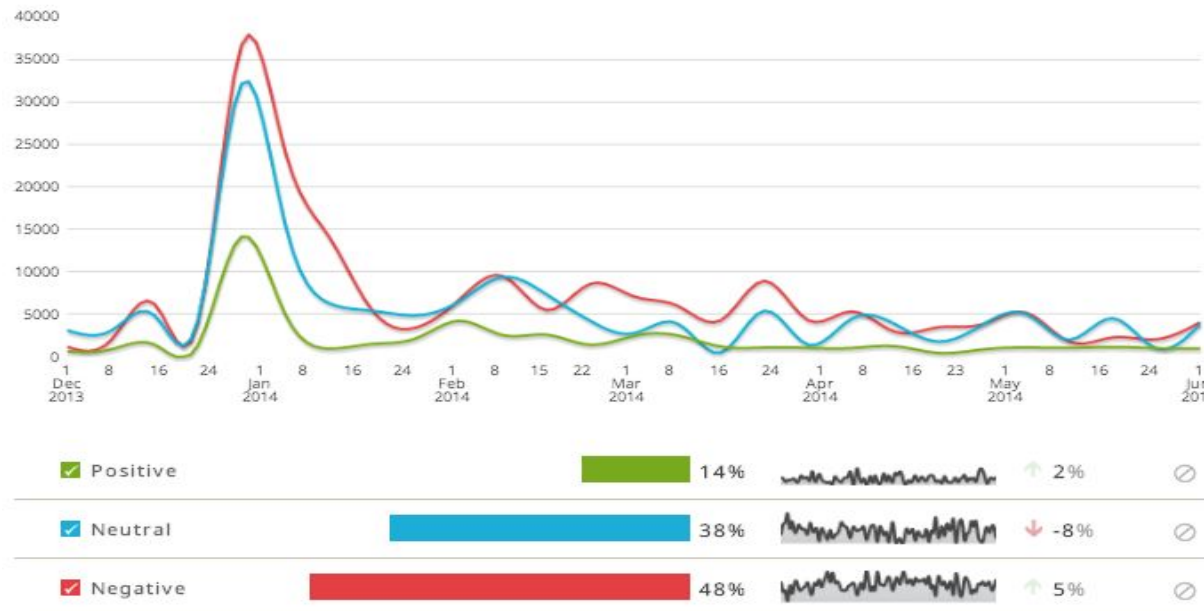
transportAPI



www.transportbuzz.com

Jaminan Kesehatan Nasional (Universal Health Coverage)

A Quick Study on Social Media (Twitter) – Sentimen Publik terhadap program JKN



Taxonomy/keywords:

"Program Name"
(Jaminan Kesehatan Nasional/JKN)
OR
"Responsible Institution"
(Badan Penyelenggara Jaminan Sosial/BPJS)

Timeline: 1 Dec 2013 – 11 June 2014

Total Relevant Tweets: 399,825

Sentiment Category:

+ Positif: Twitter post yang menekspresikan dukungan dan persepsi positif tentang program JKN e.g.: "Tertarik dengan program BPJS dan JKN"

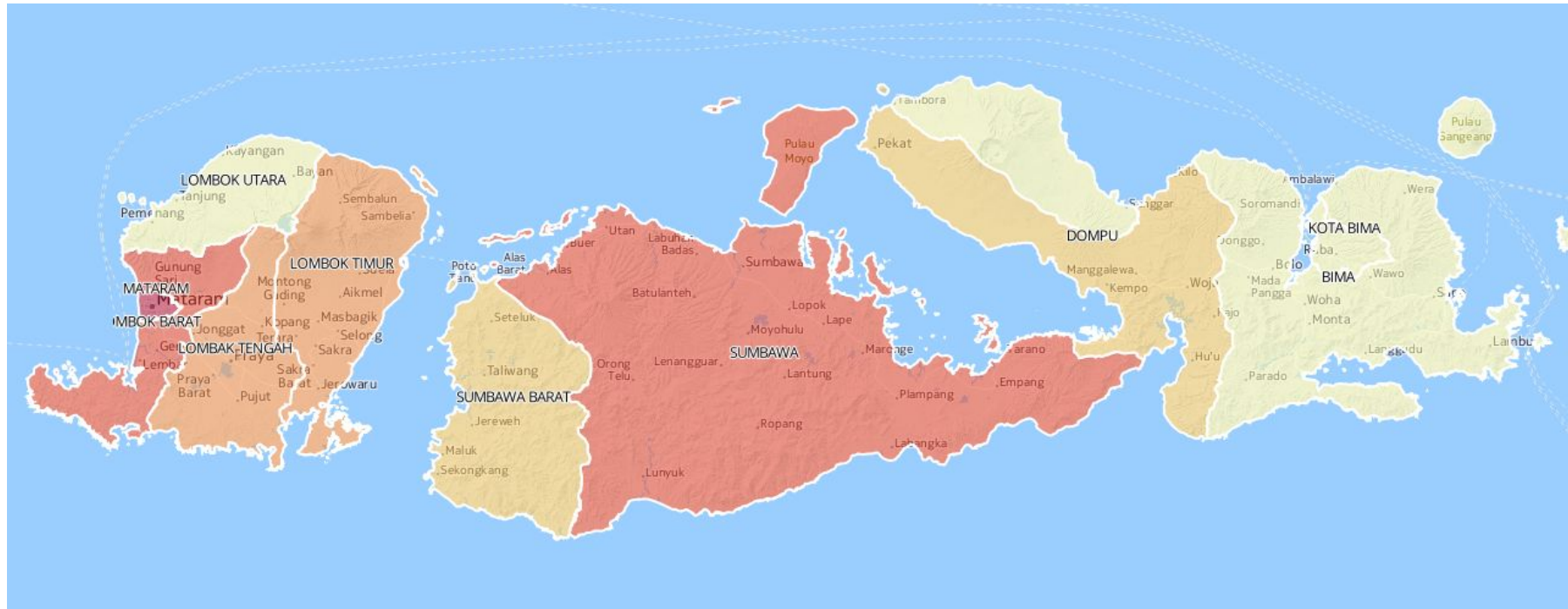
- Negatif: Twitter post yang menekspresikan kekecewaan, meremehkan, atau persepsi negatif tentang program BPJS dan JKN."

e.g.: "Sejujurnya, saya tidak yakin dengan program BPJS."

~ Netral: Twitter post yang tidak memihak atau netral

e.g.: "kita lihat saja program BPJS yang baru diresmikan oleh presiden..."

Twitter – NTB tweet volume by location

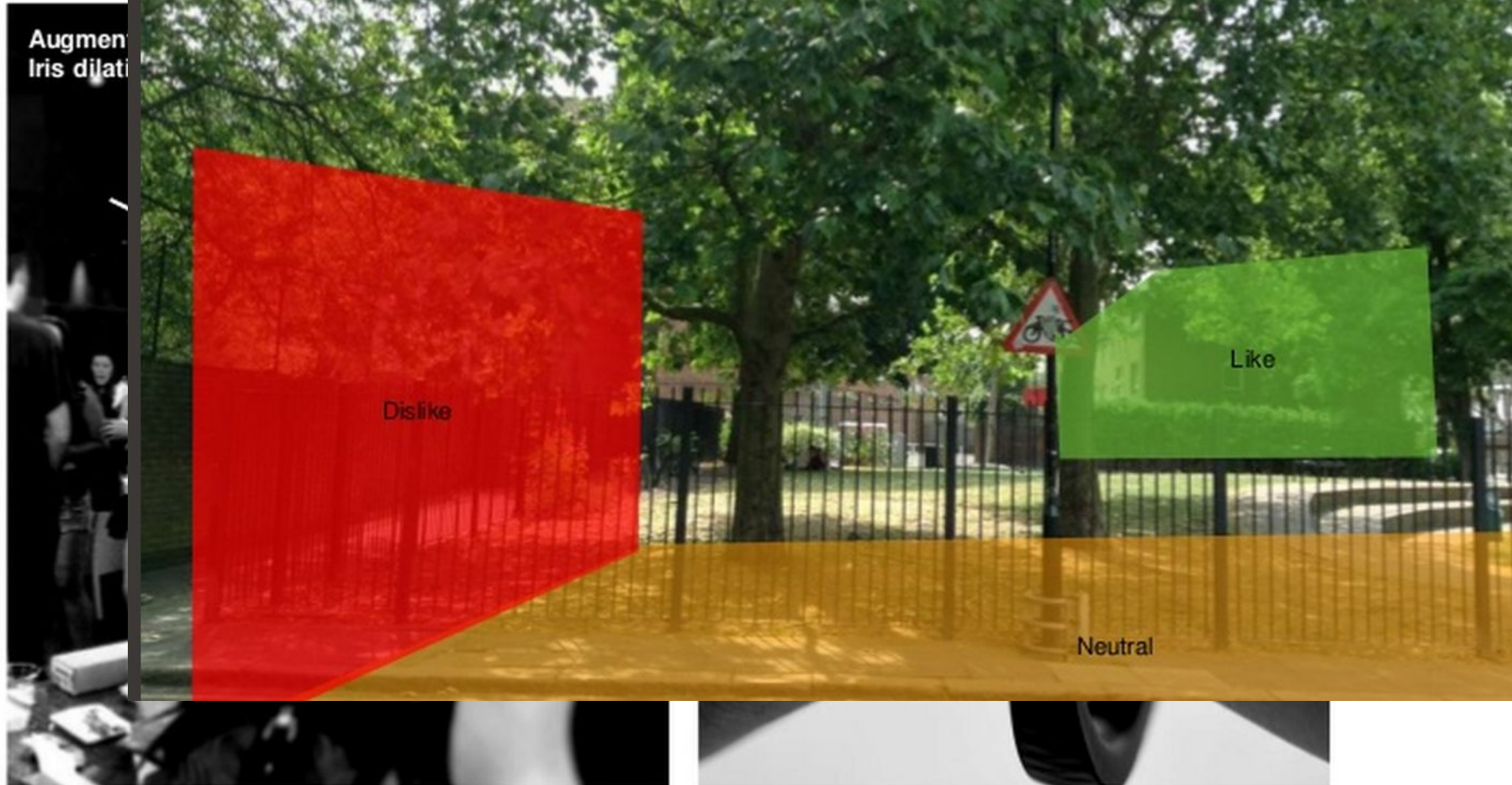


Mataram	430,579	Lombok Tengah	47,784	Sumbawa Barat	8,890
Lombok Barat	134,407	Sumbawa	37,951	Dompu	5,570
Lombok Timur	67,380	Bima	26,331	Lombok Utara	1,605

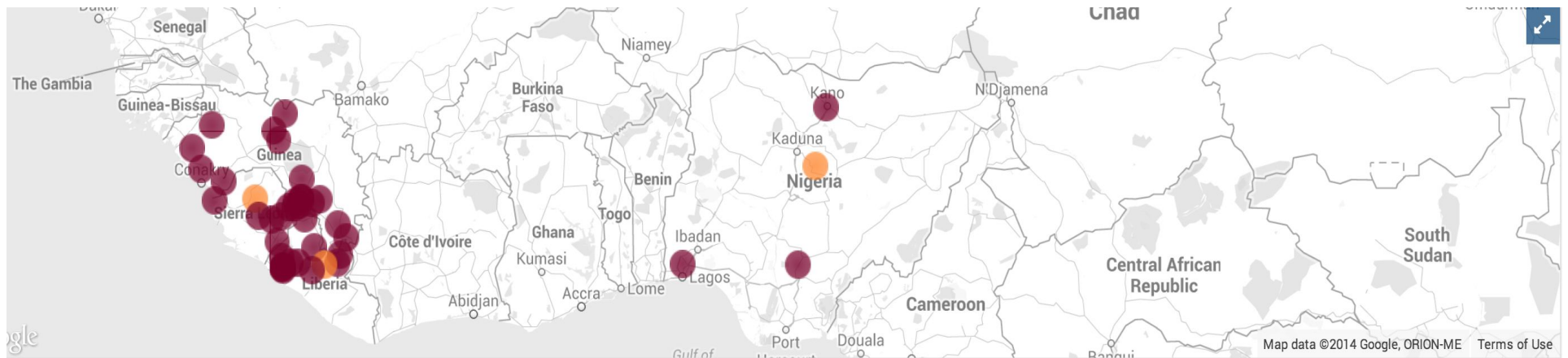
Twitter topics in NTT and NTB

Economic Issues	Labor	1,153
	Business and investment	365
	Budget	257
	Trade	204
Social Issues	Poverty and social protection	154
	Education service	25
	Health service	338
	Public service	32
Infrastructure related Issues	Transportation	1,206
	Electricity	424
	Water	32
	Administration	0
Environmental Issues	Housing	279
	Public space	17
	Land usage and management	7
	Pollution	2
	Urbanization	0

Commonplace uses high street wearables to sense citizens' emotions to places and input responses



Predicting implementation issues



August 16

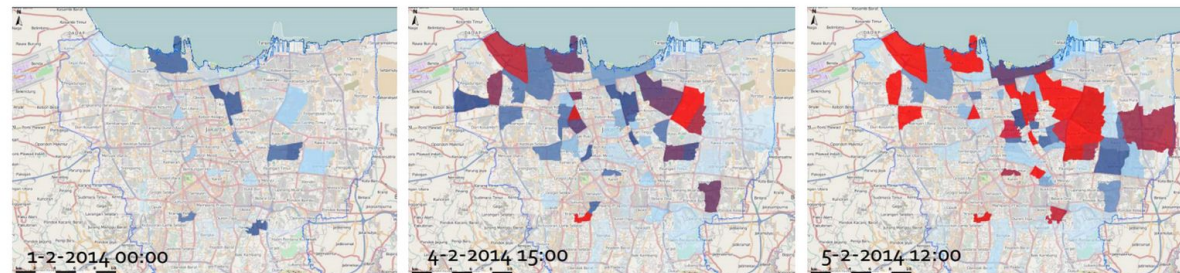
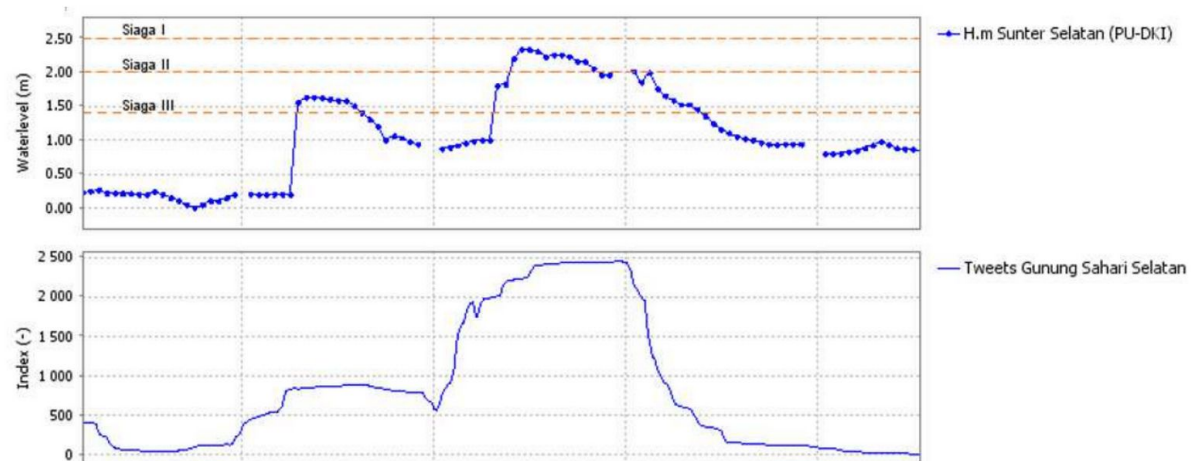
Guinea	519 cases	380 deaths	Sierra Leone	810 cases	348 deaths
Liberia	786 cases	413 deaths	Nigeria	12 cases	4 deaths

* suspected case and death counts from WHO

Data Mining for flood and disaster management

output Jakarta

Connection with J-FEWS: Flood Information System for Jakarta



Source: Floodtags

'NOWCASTING' COMMODITY PRICES IN INDONESIA

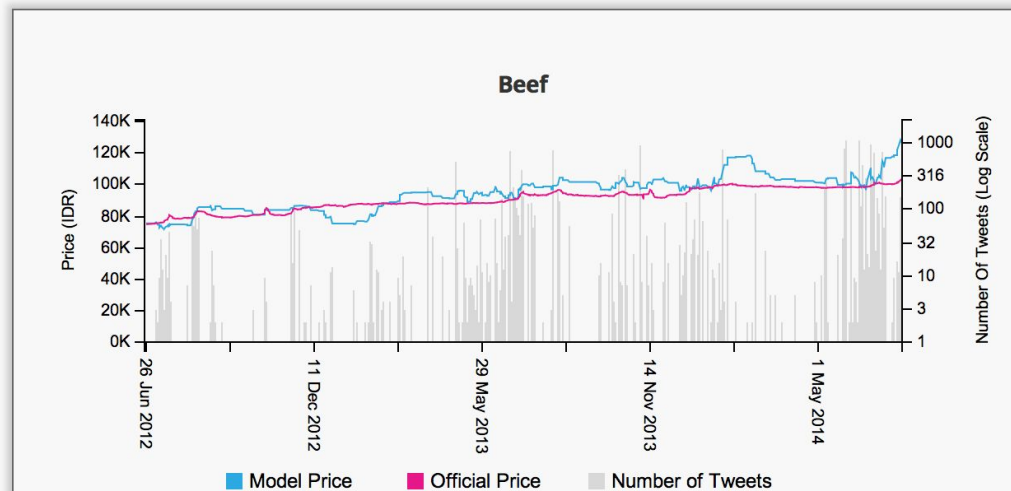
Can estimates of food prices be extracted from social media?

How do these estimates compare to official statistics?

Pulse Lab Jakarta conducted a research project to investigate the feasibility of 'nowcasting' commodity prices in Indonesia, a country famously addicted to social media. This page presents near to real-time price information on three staple food commodities: beef, chicken and onion, using tweets about food prices in Indonesian language Bahasa Indonesia.

This project has been done in collaboration with the Indonesian Ministry of National Planning Development (Bappenas) and the World Food Programme Indonesia.

For more information on this project, please visit: <http://www.unglobalpulse.org/nowcasting-food-prices>



<input checked="" type="checkbox"/>	Chennai (2627)	102.9	0	0	
<input checked="" type="checkbox"/>	Chennai, Tamil Nadu (2235)	40.3	▼ 2.9%	▼ 14.5%	
<input checked="" type="checkbox"/>	Kanchrapara, West Bengal (1960)	73.1	▼ 19.7%	0	
<input checked="" type="checkbox"/>	Kolkata (1790)	105.6	▲ 0.8%	0	

<http://v>

An

[Google.org home](#)

[Flu Trends](#)

Dengue Trends

[Home](#)

Indonesia ▾

[Download data](#)

[How does this work?](#)

[FAQ](#)

ttp://twitter.com/phanzulbtb

ttp://twitter.com/Info_JawaE

ttp://twitter.com/ASB_Offici

ttp://twitter.com/InfoSoloRa

ttp://twitter.com/muhammac

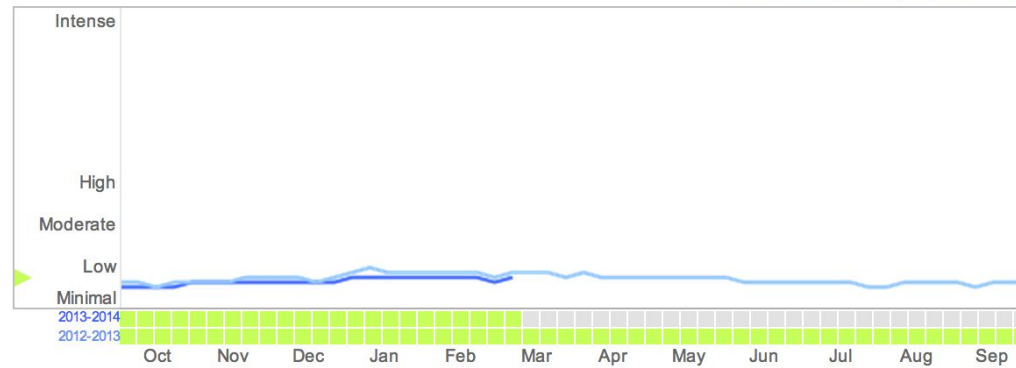
ttp://twitter.com/exokswag/s

Dengue trends - Indonesia

We've found that certain search terms are good indicators of dengue activity. Google Dengue Trends uses aggregated Google search data to estimate dengue activity. [Learn more »](#)

National

● 2013-2014 ● 2012-2013 ▾



Dengue activity was estimated using a model that proved accurate when compared to historic official dengue activity data. Data current through March 9, 2014.

Tweets about sex and drug use predict HIV



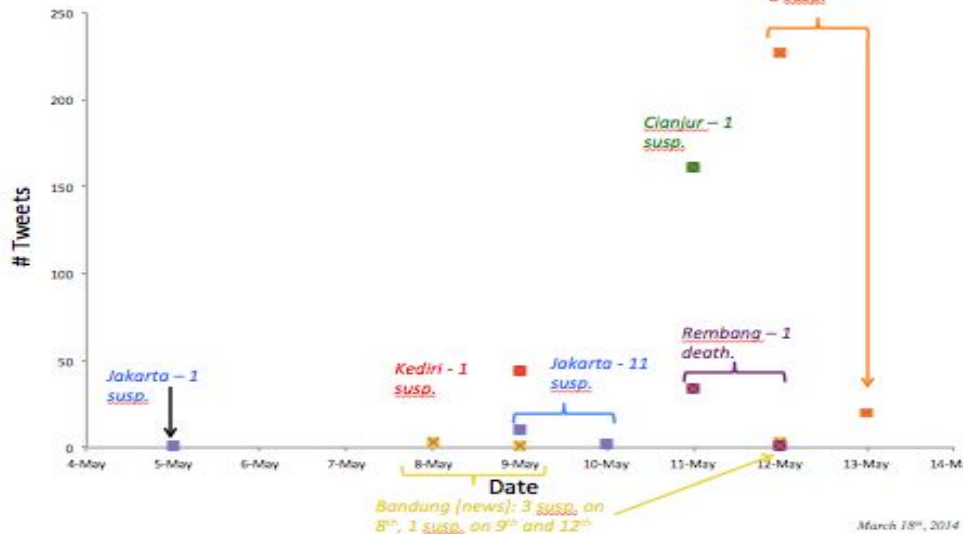
Methods of using real-time social media technologies for detection and remote monitoring of HIV outcomes. Sean D. Young, Caitlin Rivers, and Bryan Lewis. Preventive Medicine. 8 February 2014.

Penggunaan Twitter untuk Disease Surveillance (Middle East Respiratory Syndrome - MERS)

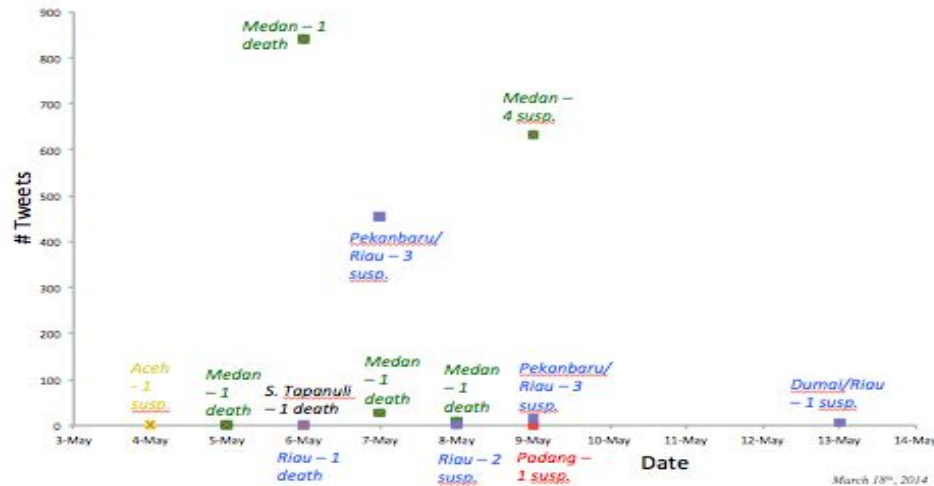
Gejala kasus MERS yang ditemukan

Taxonomy/Keyword

Java



Sumatra



SUBJECT

Pulang (return)

AND

ACTIVITY

Umrah/Umroh
Haji (Hajj)

OR

LOCATION

Timur Tengah (Middle East)
Arab (Saudi Arabia)
Jedah (Jeddah)
Mekah (Mecca)
Riyad (Riyadh)
Tabuk
Madinah (Medina)
Najran
Asir
UAE/United Arab Emirates
Turki (Turkey)
Mesir (Egypt)
Tunisia

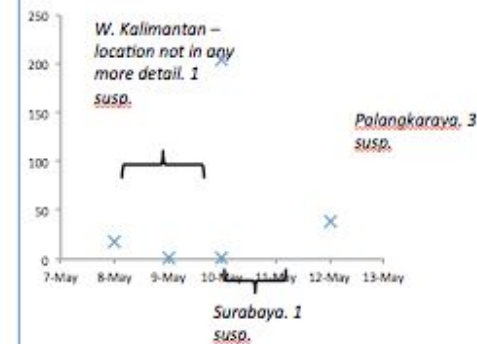
AND

SYMPTOMS

Demam (fever)
Batuk (cough)
Sesak (shortness of breath)
Flu
Influenza
Tidak enak badan (not feeling well)
Sakit (ill)
MERS

Kalimantan and Sulawesi

Kalimantan



Sulawesi

9th May: 3 cases in Kendar

13th May: 1 case – Indonesian citizen who tested positive returning from Saudi Arabia

Leading healthcare operator making the move to Big Data and analytics

JULY 29, 2014

New technologies and processes have the ability to substantially overhaul how a business operates, and that's why many organisations are now ramping up adoption.

One such organisation, the Bundamedik Healthcare System in Indonesia, is using IBM Big Data and analytics to overhaul administration and financial management systems throughout the hospital network. The first of these hospitals, RSIA Bunda Jakarta, has recently been announced as the first to be upgraded.

Big Data and analytics provides a number of benefits for enterprises, including increased understanding of trends and better future planning. By enabling a significant amount of data to be stored and subsequently analysed, businesses are rarely in the dark.

By using this trend at RSIA Bunda Jakarta, Bundamedik will be able to gain detailed insight into the spending and budget status of the hospital – something that's key when operational costs need to constantly be kept down. By using Big Data, the hospital will be able to stay in line with growth plans.

ABOUT US

[Overview](#)

[Executive Team](#)

[Delivery Capability](#)

[News](#)

[Events](#)

[Case Studies](#)

[Careers](#)

RECENT POSTS

[Understanding technological convergence](#)

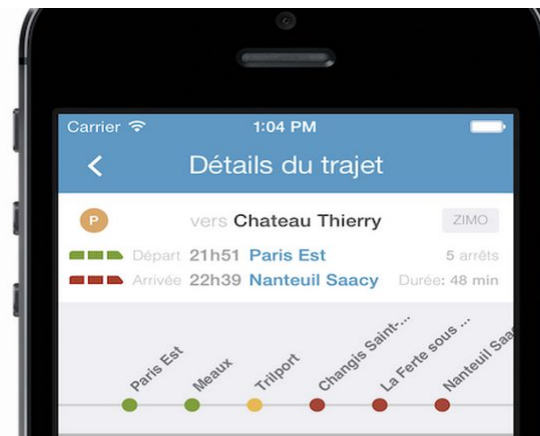
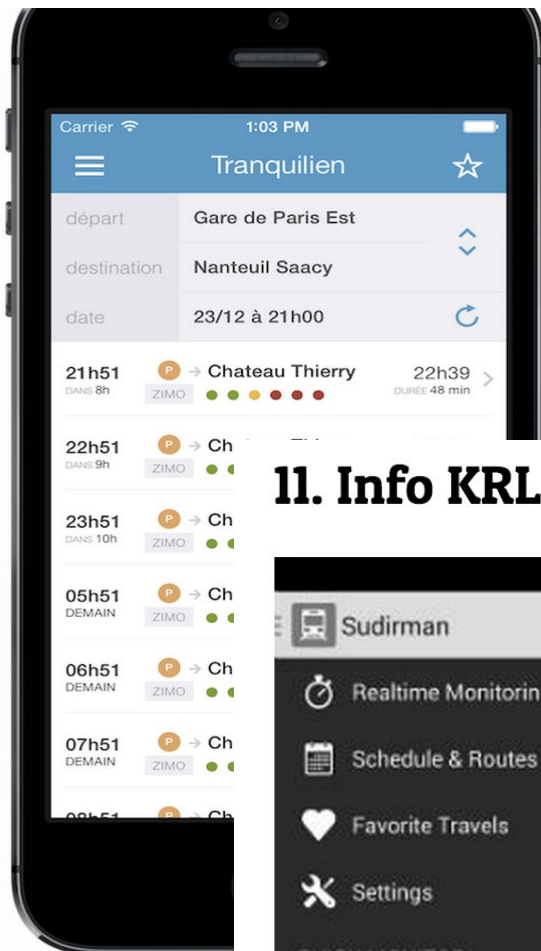
[IBM set to expand security offerings following acquisition](#)

[Understanding data lakes](#)

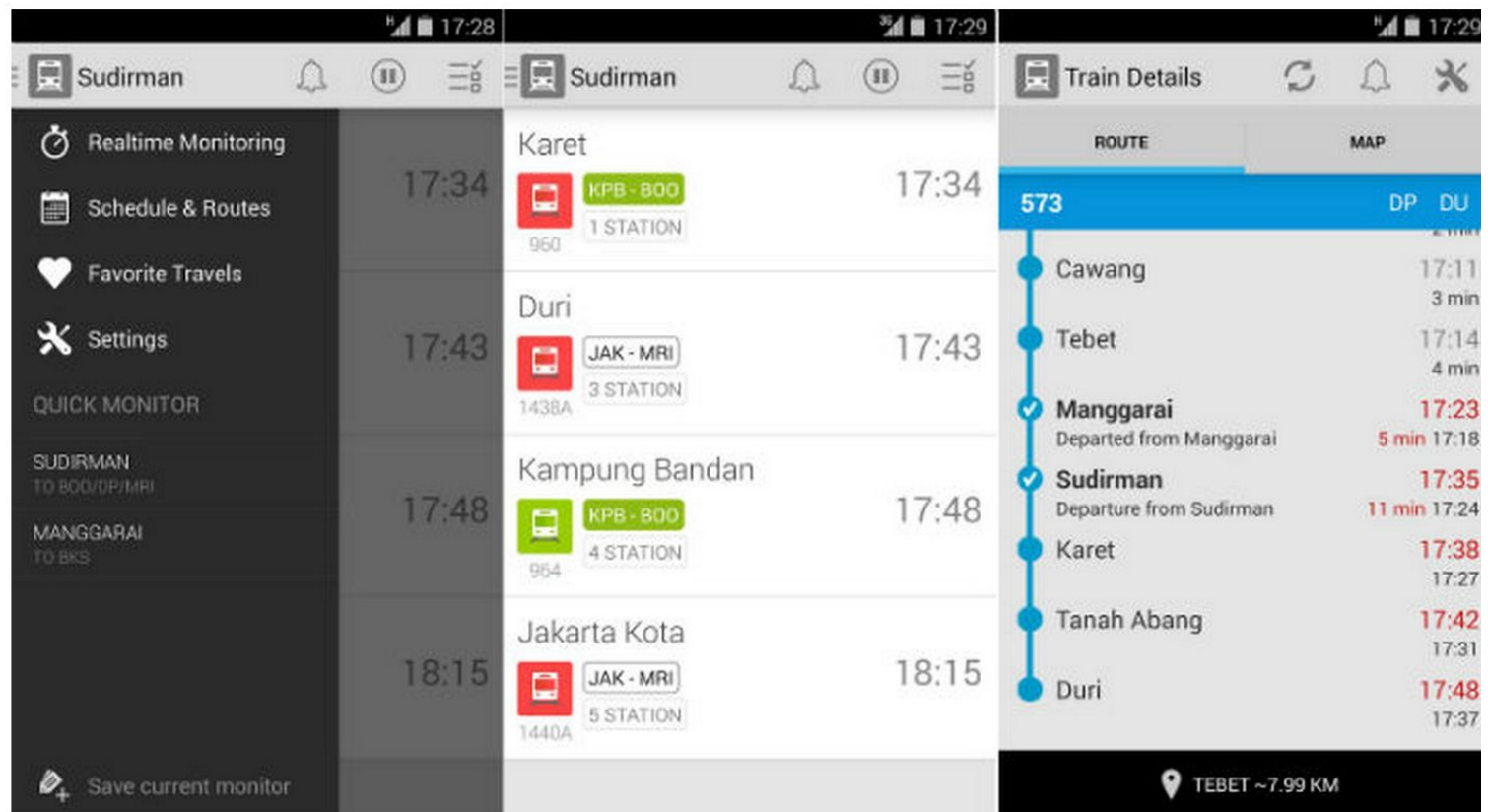
[Medical information to become easier to access with new MobileFirst apps](#)

[High performance cloud computing on the way](#)

NEWS SECTIONS



11. Info KRL



Memahami Persepsi Masyarakat tentang Imunisasi melalui Twitter

Case1: efek samping dari imunisasi

Taxonomy/Keyword

kipi, reaksi, efek samping, efek simpang, panas, demam, sakit, lumpuh, kelumpuhan, bengkak, kejang, kejang-kejang, kejang2, autis, meninggal, mati, keracunan, keluhan, nangis, menangis, muntah, muntah-muntah, muntah2, nyeri, luka, abses, syok, shock, alergi, sesak napas, sesak nafas

AND

dtp, dpt, dpt-hb, dtp-hb, DPT-HB-Hib, DTP-HB-Hib, BCG, polio, campak, pentavalen, pentavalent

OR

imunisasi, imun, vaksinasi, vaksin, diimunisasi, diimun, divaksin, divaksinasi

Case2: Launching vaksin Pentavalent

Taxonomy/Keyword

pentabio, pentavalen, DTP+HepB+HiB, DPT+HepB+HiB, vaksin baru

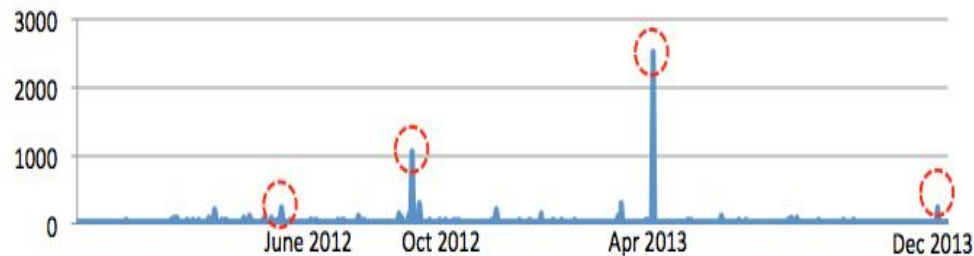
OR

(imunisasi, imun, vaksinasi, vaksin, diimunisasi, diimun, divaksin, divaksinasi)

AND

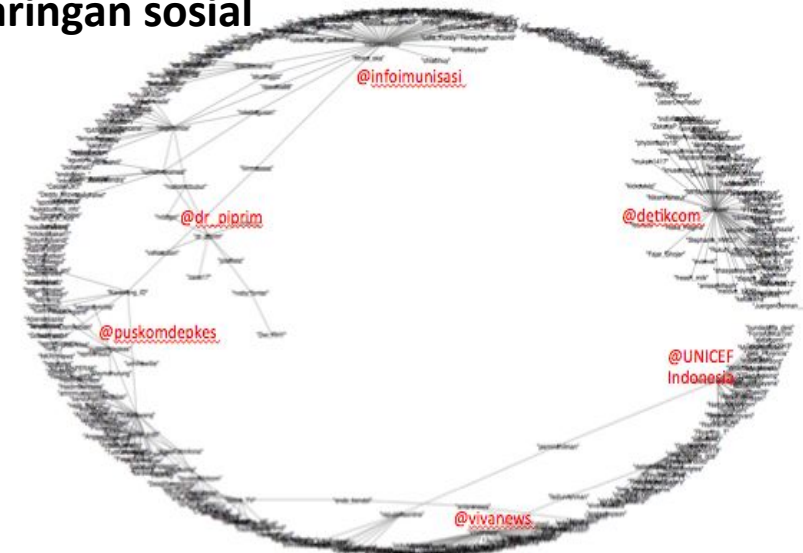
(5 in 1, 5in1, peluncuran, meluncurkan, luncurkan, canangkan, mencanangkan, penganangan, pengenalan, mengenalkan, kenalkan, introduksi, launching)

Efek samping paling sering dibicarakan



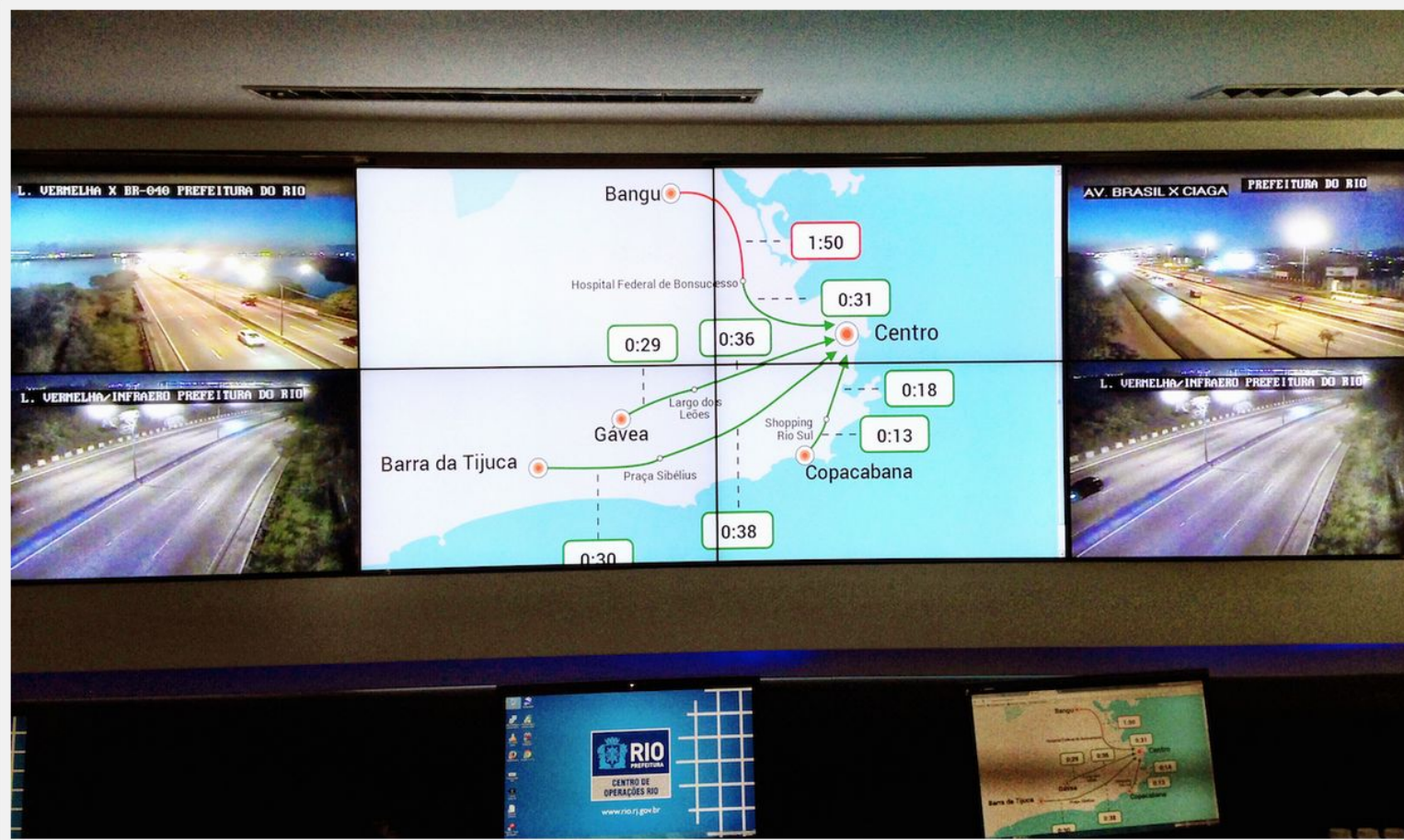
Rank	Overall	2012-06-20	2012-10-08	2013-04-28	2013-12-23
1	Autism (5048)	Autis (213)	Meninggal (1030)	Demam (1498)	Meninggal (224)
2	Fever (5000)	Meninggal (5)	Panas (14)	Bengkak (1494)	Demam (3)
3	Death (2108)	Sakit (4)	Sakit (4)	Nyeri (1491)	Nangis (1)
4	Fever (1929)	Panas (2)	Nangis (3)	Autis (1011)	Autis (1)
5	Swelling (1887)	Nangis (1)	Demam (3)	Panas (4)	-

Bagaimana informasi mengalir melalui jaringan sosial



**Complementing existing data
collecting**





Moovit's map on the big screen in Rio's Department of Transport's control room; (Photo via Moovit)

About

at Street Bump

Street Bump

About



Help keep your streets smooth

RECORD A TRIP

MY TRIPS

Start Reporting



[Terms of Service](#)

Stay Informed

[Follow @streetbump](#)

Have Questions?

[Contact us](#)

p Keep Your Streets Smooth



I measured my water map

[Home](#)[Picture](#)[About](#)

China> China

当前坐标: 144.580078, 20.13847

Share

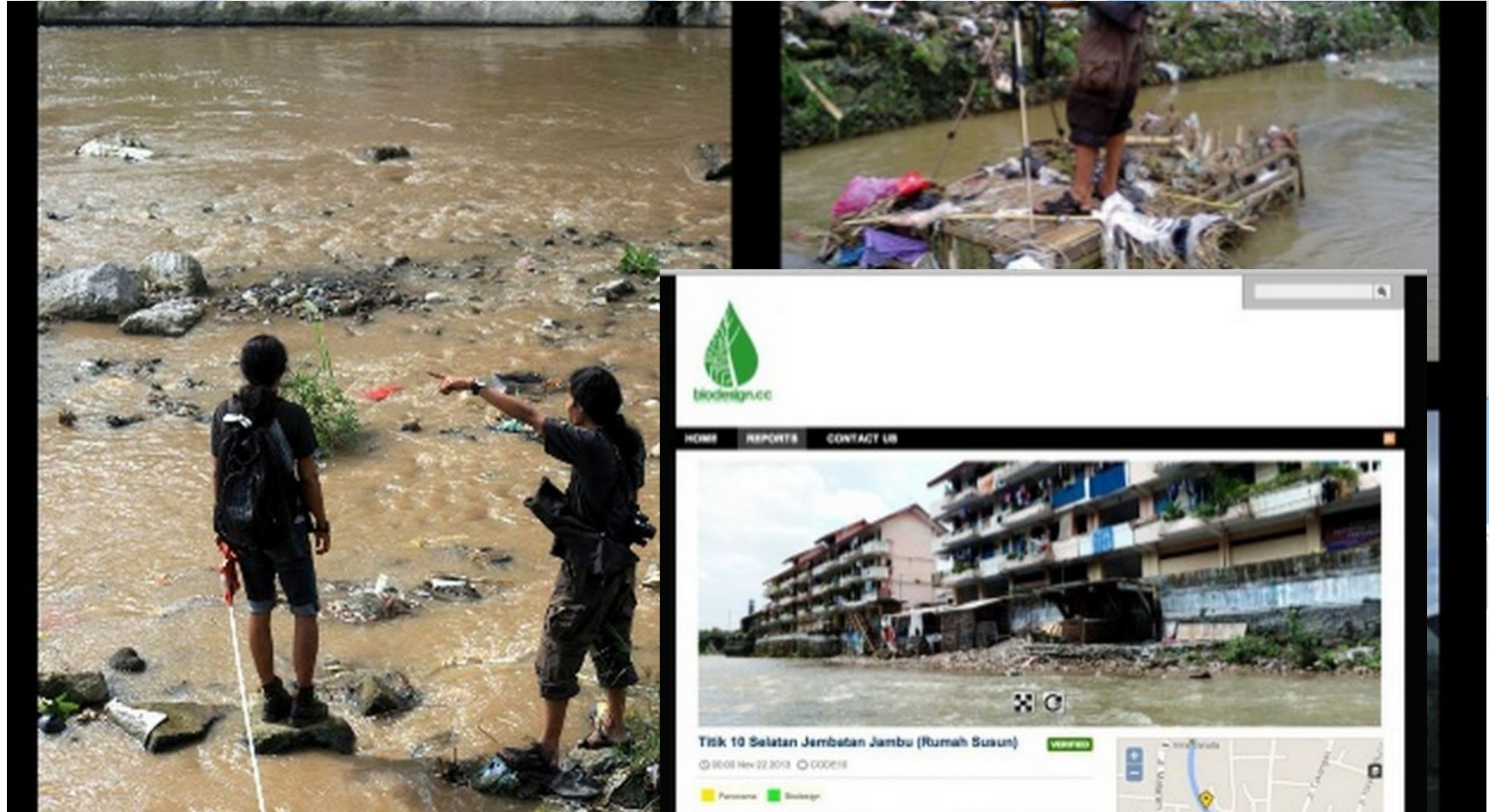
Search

screen



Overview

Surface water 21



HOME REPORTS CONTACT US



Tisk 10 Selatan Jambatan Jambu (Rumah Susun)

VERIFIED

© 10-08 Nov 22 2013 © 000018

Parosoma Biodesign

Description

10-08

Additional Data

Parosoma parosoma/10-nov-2013

Credibility

Leave A Comment

Name



Quantified self

Bellabeat: Prenatal Tracking Review

By Tia Ghose, Staff Writer | April 01, 2014 05:26pm ET

11

f Share

3

Tweet

17

Submit

0

Reddit

More



The Bellabeat feta track their babies' Credit: Bellabeat



Quantified Self
Guide to Self-Tracking Tools

Tools

Members

Forum

Search for tools, companies, members...

Go

Profile

About

Tags

[Android](#) (82)
[API](#) (20)
[energy](#) (36)
[fitness](#) (124)
[food](#) (54)
[gadget](#) (43)
[goals](#) (87)
[health](#) (185)
[iPhone](#) (185)
[learning](#) (20)
[lifelogging](#) (122)
[lifestyle](#) (76)
[location](#) (57)
[medicine](#) (60)
[money](#) (23)



Share: [f](#) [t](#)

Bedpost

★★★★★ (0 reviews)

Bedpost is a personal web application that will give you some insight into your sex life. The site has features to record every you have sex. You fill out a few simple fields such as time, how long, your rating, with whom, and some descriptive tags. Over time, you will have a record of your sex life visualized on a calendar. The site has no social networking features to ensure that your data is private. They are working on a feature to allow partners to log in to the same account.

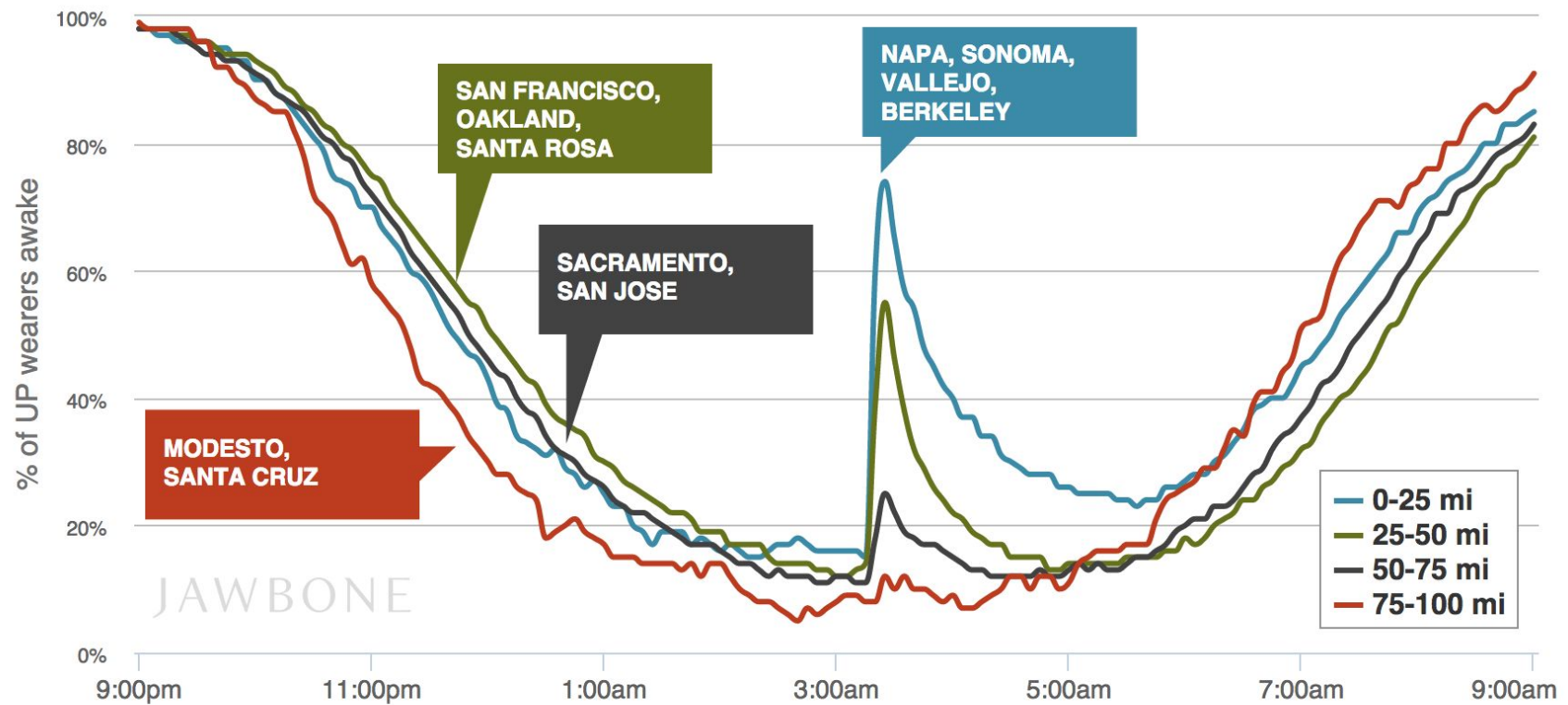
<http://bedposted.com/>

Tags: [lifestyle](#), [web app](#)

Price: [free](#)



Login with: [Google](#)



We wish all the people in the Bay Area who were affected by the earthquake a speedy recovery and a good night's sleep.

Yelp Reviews Help Track Food Illnesses

By MARIA NEWMAN
May 22, 2014

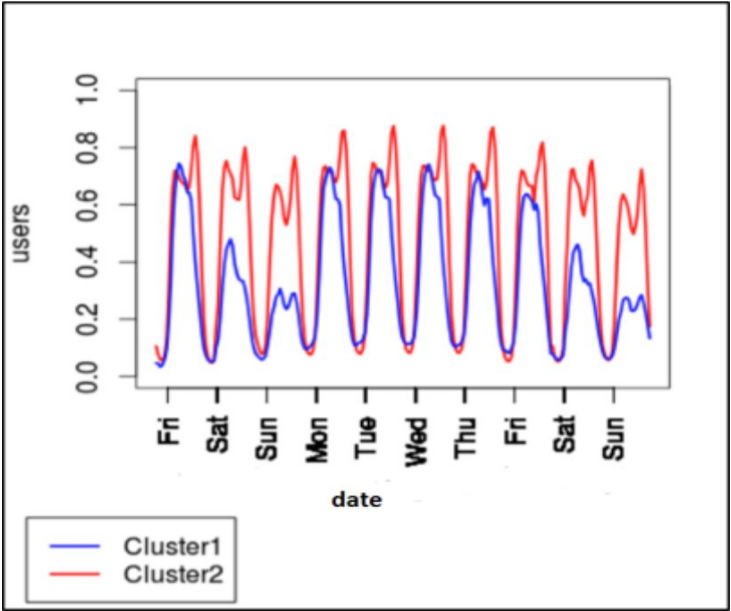


After a particularly bad restaurant meal, you may be moved to post a review [on the website Yelp](#), warning other diners. But now someone else is listening in: New York City health officials, who may try to track you down if you complain that the meal made you sick.

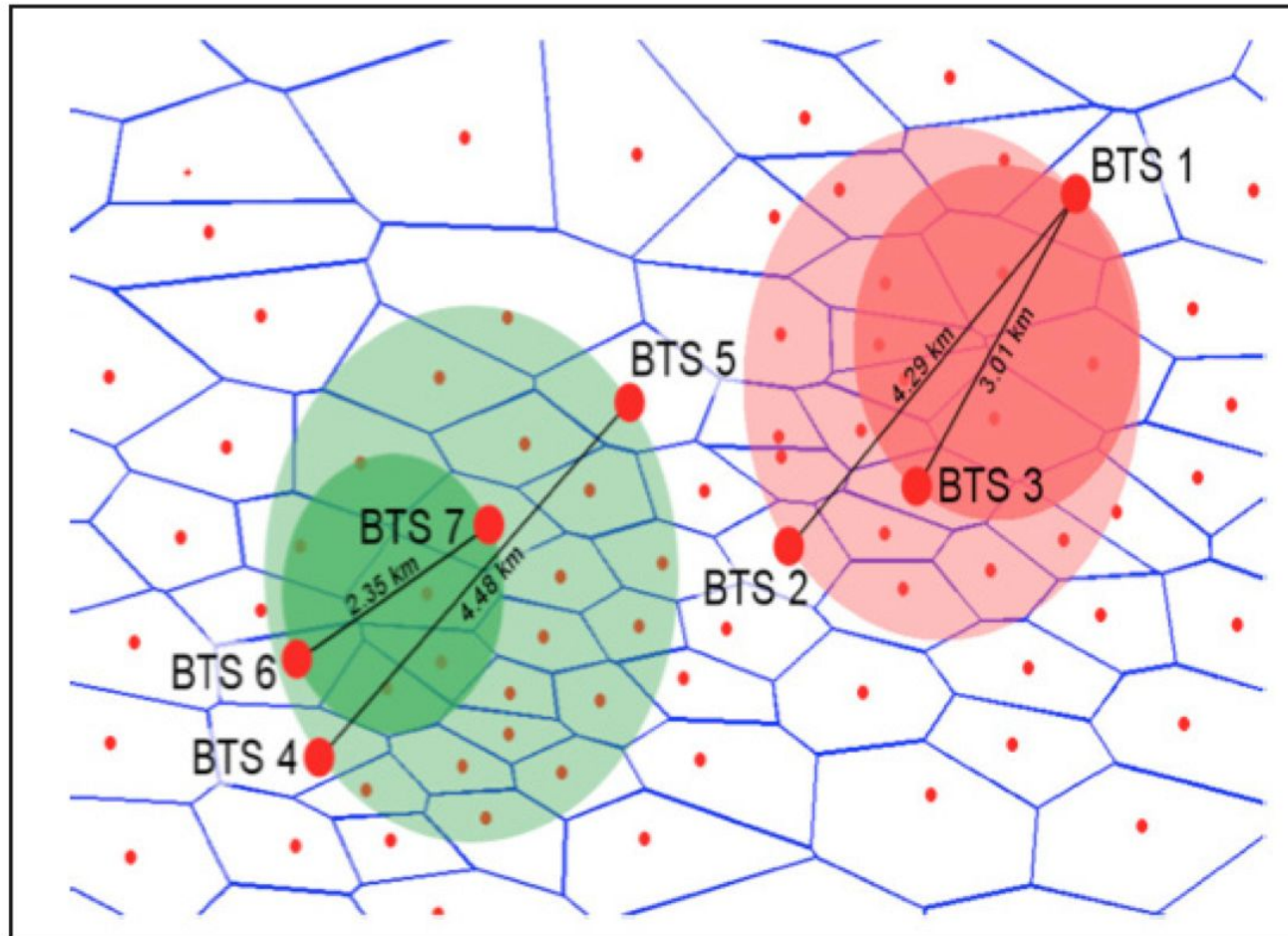
The federal Centers for Disease Control and Prevention [released a report](#) on Thursday saying that the city's Department of Health and Mental Hygiene had completed a pilot project that used Yelp reviews to help identify unreported outbreaks of food-borne illness.

Using a software program developed by Columbia University, city researchers combed through 294,000 Yelp reviews for restaurants in the city over a period of nine months in 2012 and 2013, searching for words like "sick," "vomit" and "diarrhea," along with other details. After investigating those reports, the researchers substantiated three instances when 16 people had been sickened. Those people had eaten the house salad, shrimp and lobster cannelloni, and macaroni and cheese spring rolls at three restaurants that the agencies are not

Evaluation of policy



Using mobile records to evaluate health policy real time?



A mobility index to evaluate H1N1 response in Mexico City

Telefonica Research, 2011 (<http://www.unglobalpulse.org/publicpolicyandcellphonedata>)

To sum up

1. Real time feedback
2. Anticipate/predict near term trends
3. Identify implementation issues
4. Program evaluation

A big data project value chain

INSIGHTS

DATA

ANALYTICS



DEXTRA

[ABOUT](#)

[COMMUNITY](#)

[CHALLENGES](#)

[WORKSHOPS](#)

[BLOG](#)

[SUBSCRIBE](#)

[LOGIN](#)

PRUDENTIAL SINGAPORE HEALTHCARE CHALLENGE

COMPETE + COLLABORATE

Prudential Singapore invites you to predict the cost of seeking treatment for individual consumers to enable consumers to make better healthcare & financial planning decisions. Can you predict the consumers who have been admitted to a hospital in 2013 and their hospital bill size?



PREDICTING HEALTHCARE COSTS

Collaborate with and learn from a whole community of Data Specialists.
Meet the best in your field, and get acquainted with new tools and techniques.
Stand to win cash prizes in exchange for your winning model or algorithm!

TAKE PART IN A CHALLENGE NOW!

REGISTER NOW @ [CHALLENGES.DEXTRA.SG](https://challenges.dextra.sg)

LAUNCHED
FRI, 14 MAR
REGISTER
NOW!



Working with us

- Trainings/capacity building
- Secondments
- Big data assessment
- Joint prototyping
- Full research project

Terima Kasih

#data4id